

# Annual Prescribed Person's report on protected disclosures 2023-24

Between 1 April 2023 and 31 March 2024 the INWO received 122 cases. 114 cases were closed, with action taken as detailed below.



18

Does not meet INWO definition of whistleblowing

Completed INWO investigations

9



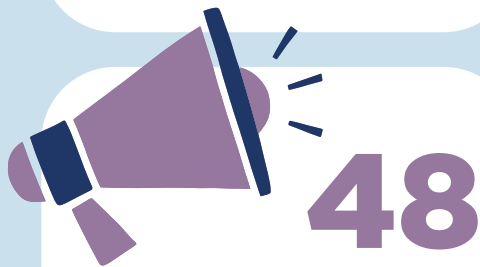
12

HR \ employment issue



1

Decided not to take forward due to involvement of another organisation



48

Potentially whistleblowing, signposted as appropriate

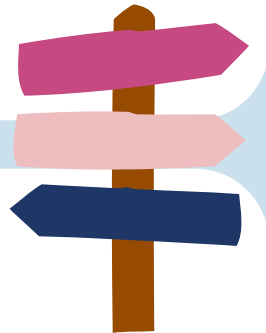
1

Shared information with other relevant organisation



8

Signposted to other regulator

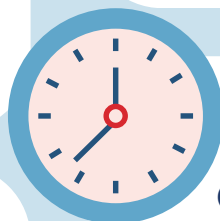


5

Monitored referral route\*

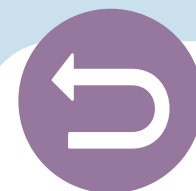
Early action taken by NHS to resolve risks

4



Case not appropriate for INWO due to timescales

5



3

Whistleblower withdrew from the process

\*Find out more on [monitored referrals](#)